

Visual Story - St John on the Wall Church



Outside St John on the Wall



Broad Street



Quay Street

There are three archways we can walk through.
Two of these have colourful graffiti by the artist Andy Council.



The entrance and three steps to the Upper Church Door.



The Steps up to Church



Welcome Desk



The Welcome Desk and door into the church.



Volunteers may talk to us about the church and answer any questions.

We are in the middle of a busy part of Bristol, so we will hear people and the traffic outside.



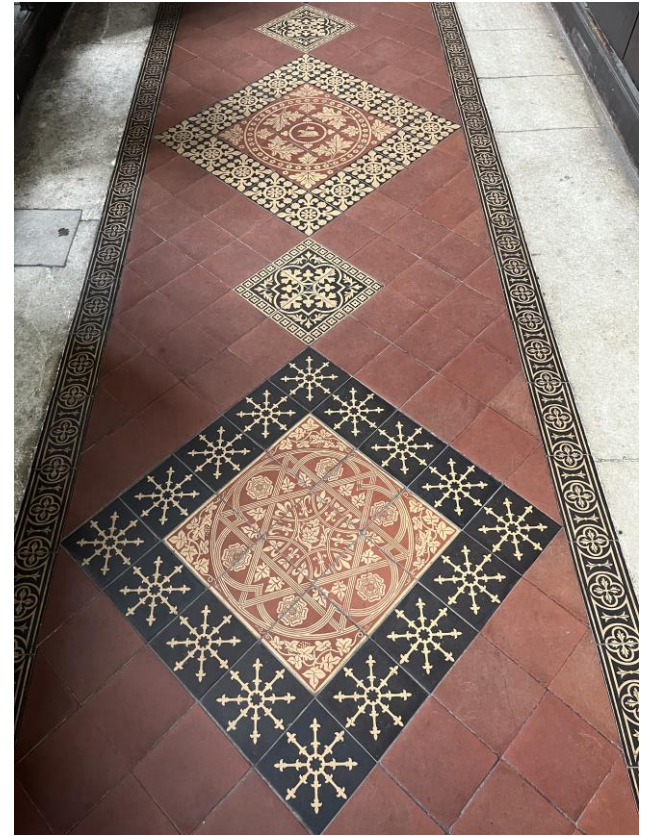
Inside the church



Pews or seats, with doors to open



The ceiling and windows are high.



The floor is old and can be uneven.

Things we will see inside this church

1. A font
2. A pulpit
3. Memorials to people who came to this church in the past.
4. A cross.





Steps to the chancel and altar area



Turn around and we see the organ

The door and steps into the vestry.

This is a little room with books and old pictures of the St John's we can look at.



Exit through the doors and steps we came in.



To visit the crypt, we can ask one of the volunteers to help us.



To find the crypt, turn right again outside the entrance, walk through an archway. Turn right again and walk along the outside of the church.

We have to look for the small door into the Crypt.
Remember to 'dip' our head before going in as the door is low
and carefully walk down the steps.

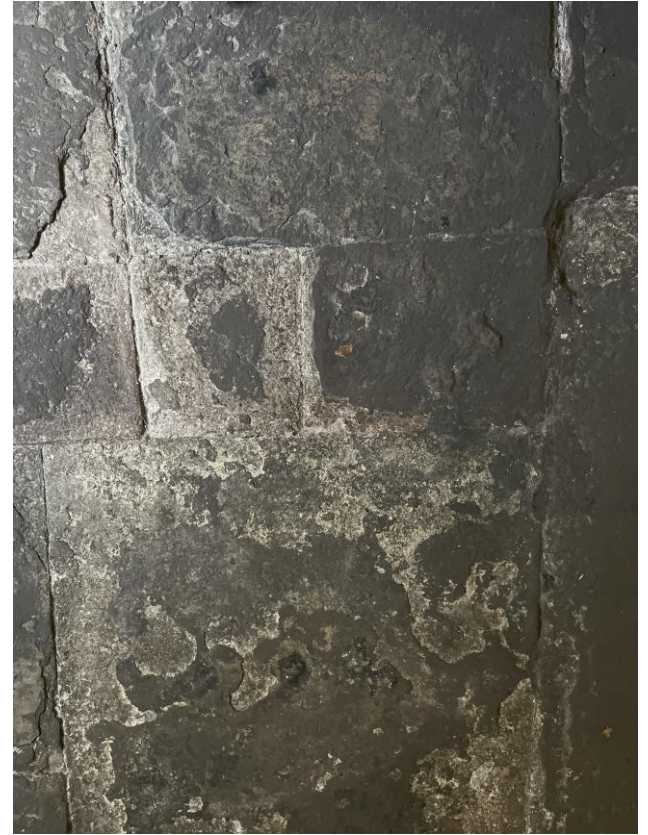


Inside, it will be dark at first, but our eyes will adjust. It may also feel or smell damp.

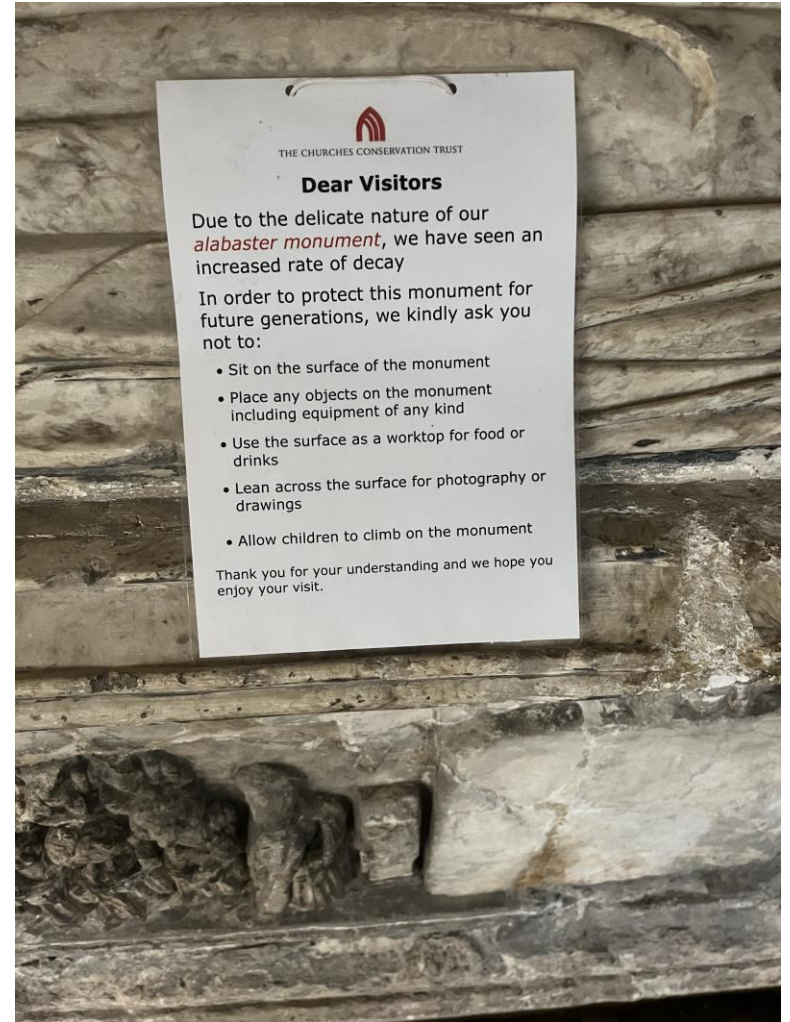


The church is in the centre of Bristol next to a busy road and traffic can be heard when we are inside.

There is a step in the middle of the crypt.
The floor is old and uneven.



There are people remembered here who came to this church in the past. In the Crypt, there are lots of things which are old and fragile. Some of these have signs telling visitors not to touch them.



Exit by the same way we came into the crypt. We use the steps and then up onto the street.

We hope you enjoyed your visit today.

For more information about this church and the Churches Conservation visit the website:
<https://www.visitchurches.org.uk/visit/church-listing/st-john-on-the-wall-bristol.html>





Useful Information

St John on the Wall Church is open for everyone: People of all ages, backgrounds, all faiths and none.

Things to be aware of before your visit:

- All children should be accompanied by an adult.
- Inside this historic building it can be cold.
- There are uneven floors, low levels of lighting - especially on a dark day, steps and narrow entrances.
- Toilets: There are no toilets at the church.
- The nearest public toilets: St Nicholas Market, The Corn Exchange, Corn Street, BS1 1JQ.
- The nearest Changing Places toilets: City Hall, College Green, BS1 5TL

List of toilets available for public use, in Bristol:

www.bristol.gov.uk/residents/streets-travel/public-toilets

For further information about this church please contact our West Office:

west@thecct.org.uk or 0117 9291766.